



SURAJ  
LUMINA  
CADELL ROAD, MAHIM

*Imagine. Inspire. Illuminate.*





Artistic Impression

# *Watch your world illuminate*

Open the door to the sea. Let the warm sun and fresh air inspire you everyday. Feel the world come closer at Suraj Lumina.

This means more time for the things you love, like sunsets from your floor-to-ceiling windows and morning coffee with the sea. Here, you experience the best of Mumbai. Imagine life at the historic Cadell Road, Mahim, where you are just minutes away from Hinduja Hospital and Bombay Scottish School.

Whether it's a drive to Bandra Kurla Complex for work or Palladium with friends, everything you need is minutes away.



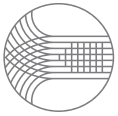


## *Key External Amenities*

Grand entrance lobby | Mechanized tower car parking | 24/7 Security  
Fire safety provisions | RO water system | Efficient rainwater harvesting system  
Power backup support | Earthquake-resistant structure

## *Key Internal Amenities*

Fitness center | Branded vitrified tiles in all the rooms | High-quality CP & sanitary fittings from a reputable brand | Premium quality granite kitchen platform  
Premium anodized aluminum windows with a powder-coated finish | Black granite and marble window sills to add a touch of sophistication

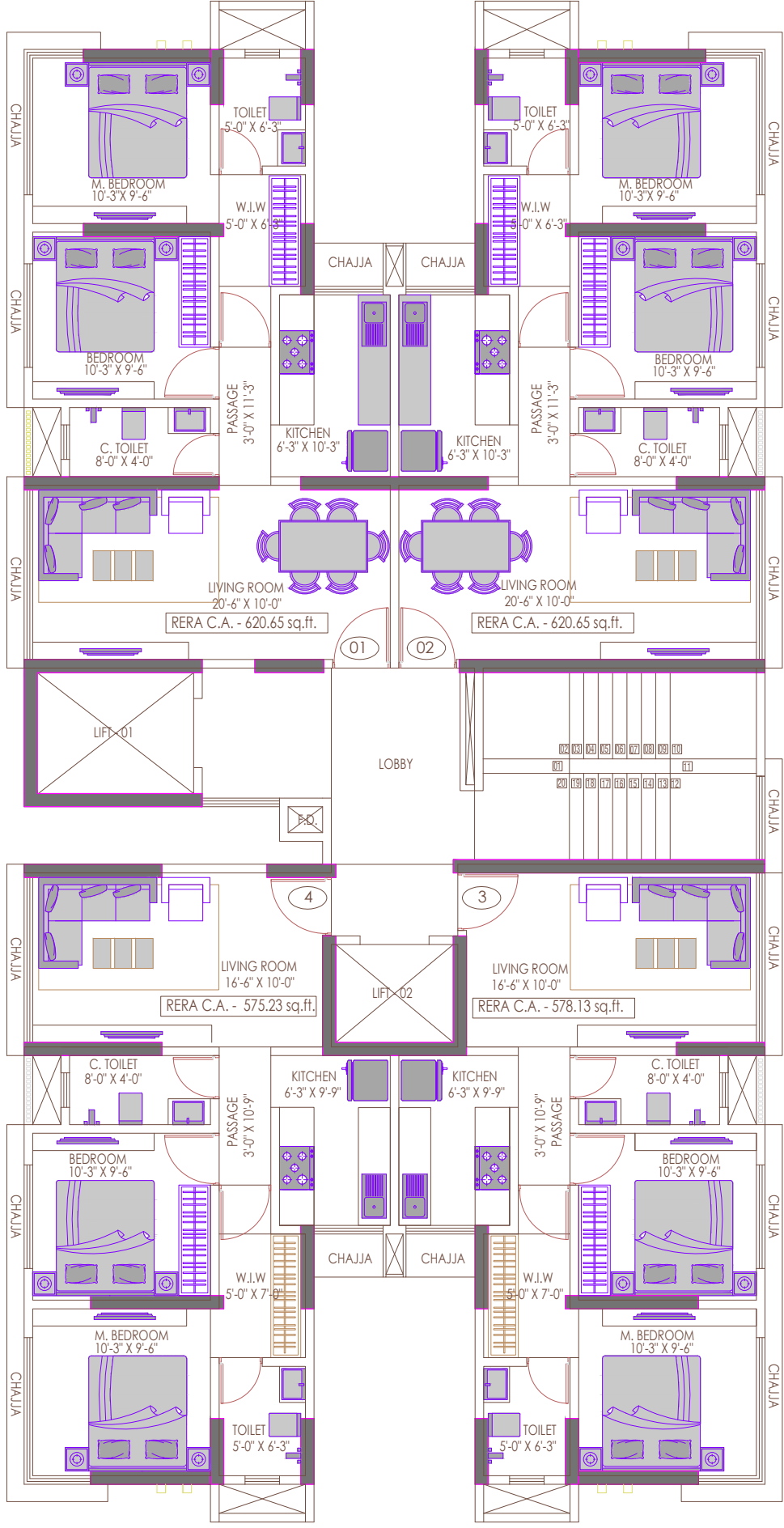


SURA J  
LUMINA  
CADELL ROAD, MAHIM

# TYPICAL FLOOR PLAN

2BHK

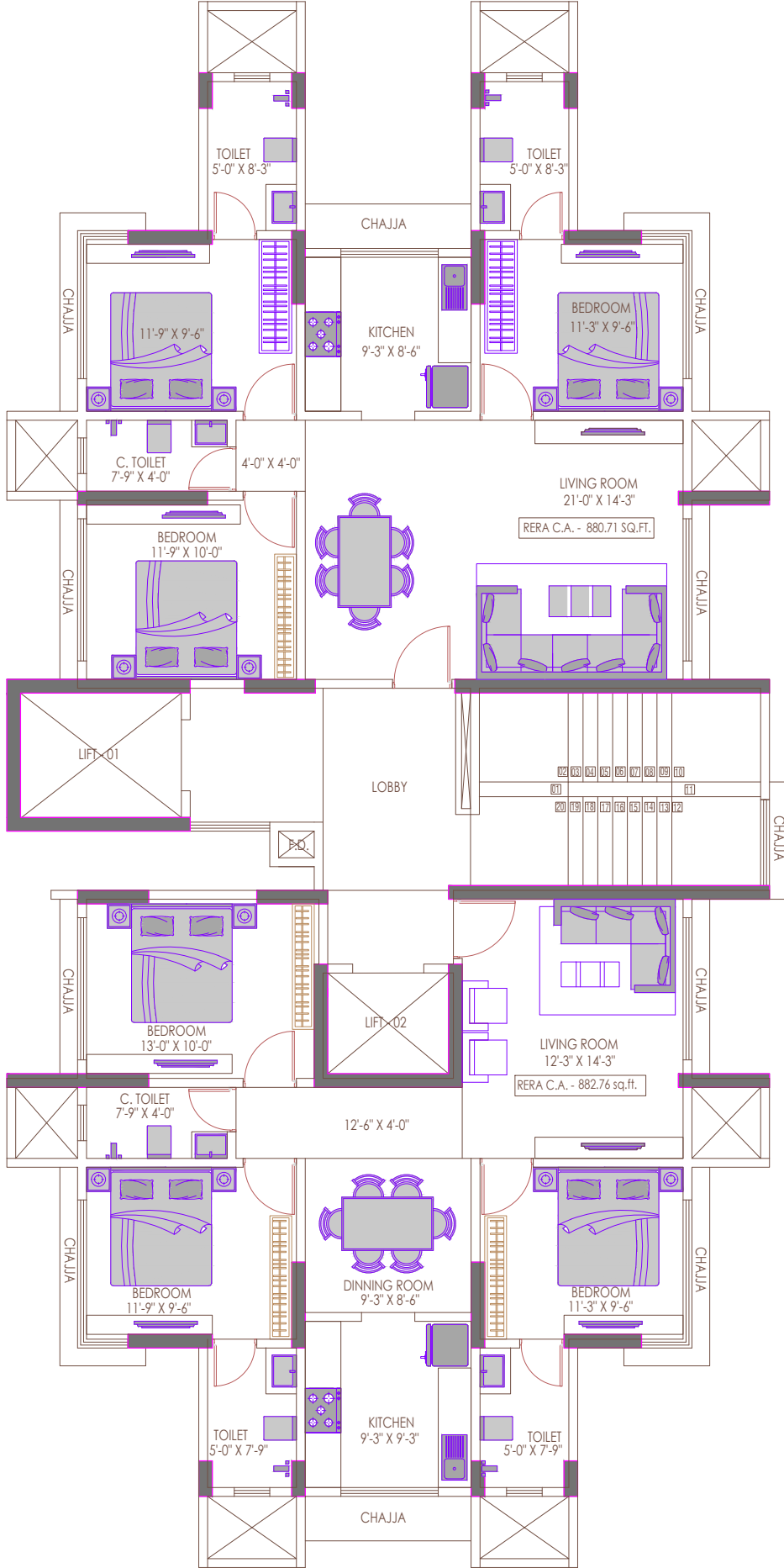
8<sup>th</sup> to 13<sup>th</sup> Floor

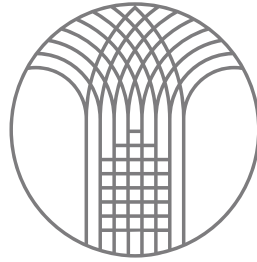


**TYPICAL  
FLOOR PLAN**

**3BHK**

**17<sup>th</sup> to 20<sup>th</sup> Floor**





SURAJ

## LIFE BEGINS HERE

Suraj Estate Developers are a marquee real estate construction company with over 37+ years of experience in building inspiring spaces. In Mumbai's most historic locations, we have developed 42+ residential and commercial projects with a focus on quality and innovation. Our celebrated partners and best-in-class associations bring the world's finest to its most discerning residents. We have developed custom spaces for the country's leading businesses including National Stock Exchange, Union Bank of India and the Clearing Corporation of India. Our ongoing residential projects—The Palette, Ocean Star, Vitalis, Eterna, Park View, Louisandra, Emmanuel and Ave Maria—redefine city living while transforming the landscape of Mumbai. Our landmark real estate developments offer premium quality across budgets and requirements.

THE **A** **B** **C** **D** OF SURAJ

**ASSURE**  
Assurance of 37+ years' experience in understanding space, design and construction

**BUILD**  
Building 42+ projects across residential and commercial segments

**COLLABORATE**  
Collaborations across 10 lakh sq ft in prime locations

**DEVELOP**  
Developing the heart of Mumbai through premium offerings for every budget



# SURAJ LUMINA

CADELL ROAD, MAHIM

## in The Neighbourhood

### PLACES OF WORSHIP

St. Micheal's Church **1.5 Km**  
Siddhivinayak Mandir **2.5 km**  
Sitla Devi Mandir **800 mtr**  
Portuguese Church **1.8 km**

### ENTERTAINMENT & RECREATION

Dadar Chowpatty **900 mtr**

### SHOPPING

Jio World Drive **4.4 km**  
High Street Phoenix **6.3 km**

### COMMUTE

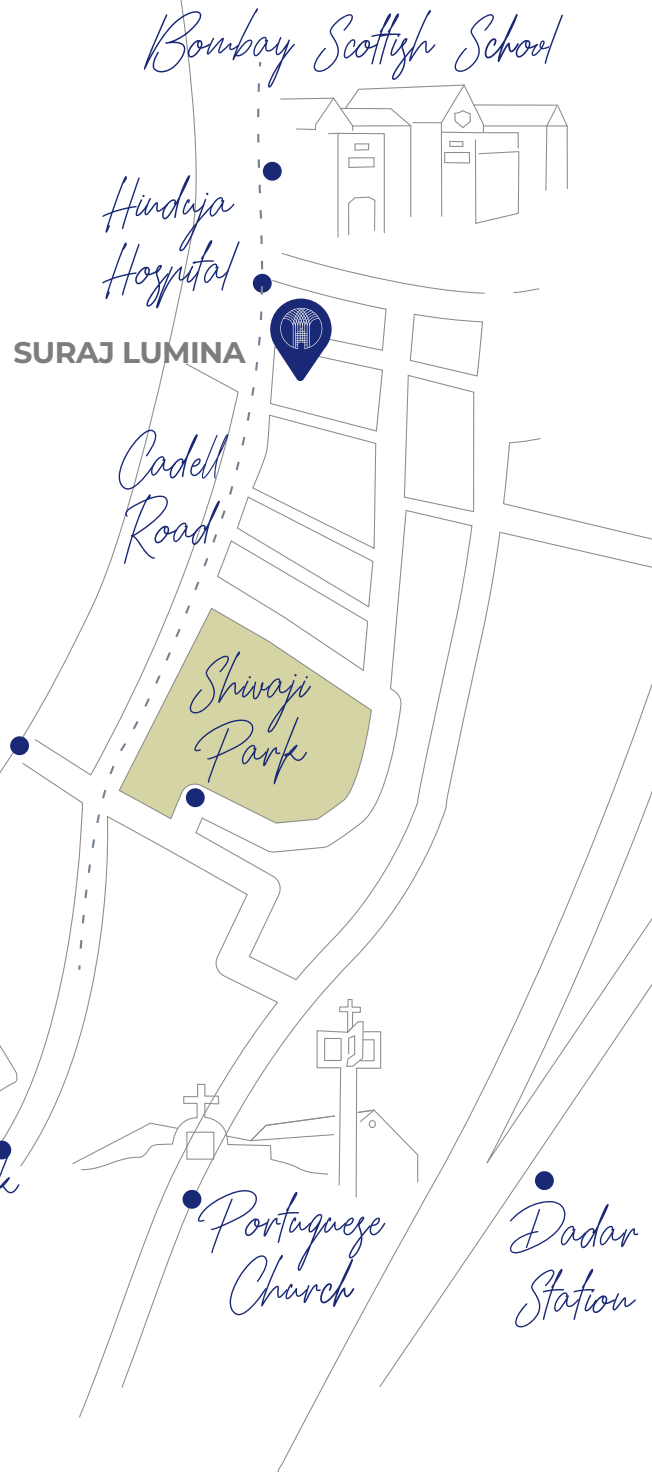
Mahim Railway Station **2 km**  
Upcoming Sitladevi Metro Station **650 mtr.**  
Domestic Airport **8.6 km**

### HOSPITALS

Hinduja Hospital **500 mtr**  
Lilavati Hospital **3.7 km**

### EDUCATION

Bombay Scottish School **400 mtr**  
Canossa High School **1.5 km**



### SITE ADDRESS

Suraj Lumina, FP 70, Cadell Road,  
Mahim, Near Coffee by Di Bella,  
Mumbai - 400016

### CORPORATE OFFICE

Suraj Estate Developers Ltd.  
Aman Chambers, 3rd Floor, Century Bazaar,  
Prabhadevi, Mumbai 400025

**Call +91 89515 62424**

**surajlumina.com**

     **@surajestate**

**www.surajestate.com**

MahaRERA Registration No. P51900054054 and available on the website <https://maharera.mahaonline.gov.in>

The plans, specifications, images and other details herein are only indicative and the Developer / Owner reserves the right to change any or all of these in the interest of the development. This printed material does not constitute an offer and / or contract of any type between the Developer / Owner and the recipient. Any purchaser / lessee of this development shall be governed by the terms and conditions of the Agreement for Sale / Lease entered into between the parties, and no details mentioned in this printed material shall in any way govern such transactions.